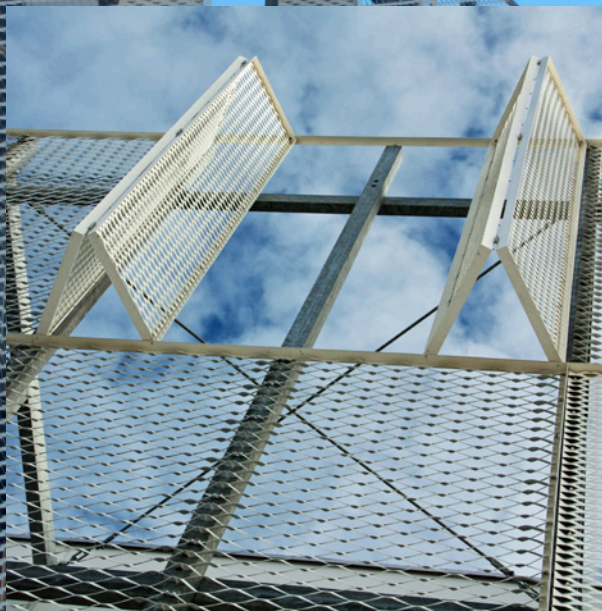




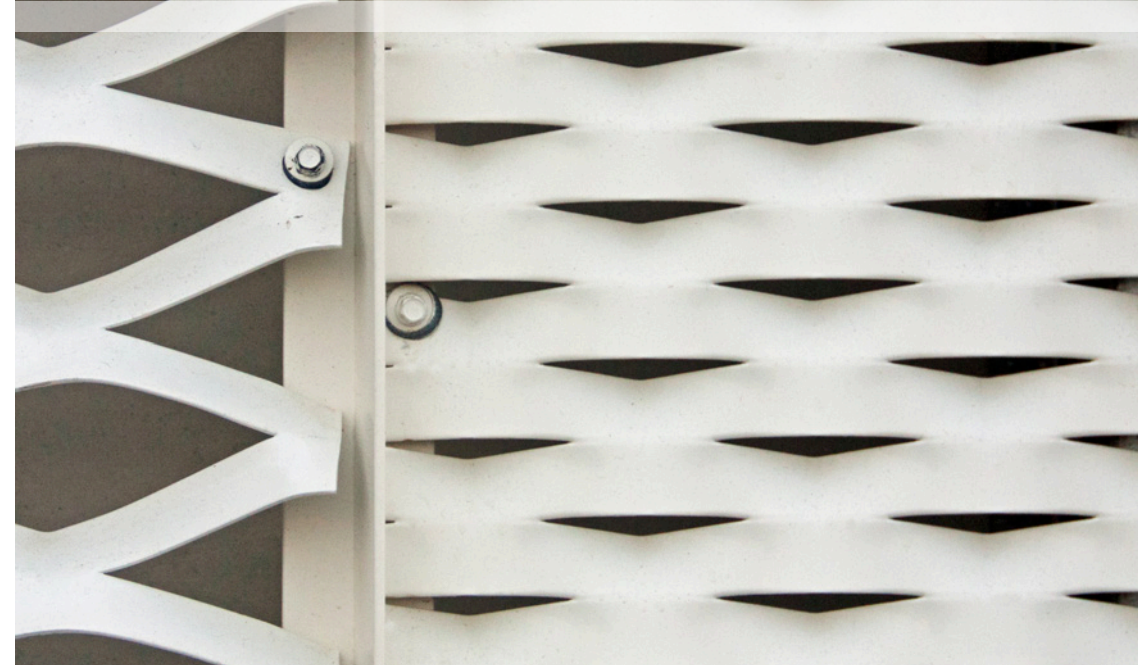
Expanded metal improves both indoor climate and exterior design



THE FACTS BEHIND A VERSATILE SUN SCREEN

1,600 m² of expanded metal panels from RMIG keep indoor temperatures down and concentration levels up at Learnmark educational facilities.

- Raw material: Aluminium EN 1050
- Pattern: LT200x80x24x2 and LT115x52x24x2
- Thickness: 2.0 mm
- Surface treatment: Powder coating
- Architects: Kjær & Richter A/S



THE CREATIVE USE OF EXPANDED METAL FROM RMIG MOUNTED TWO METRES FROM THE FACADE KEEPS THE SUN OUT AND GIVES THE BUILDING A WELCOMING AND LIGHT EXPRESSION

For architects Kjær & Richter, it was important to combine the best possible indoor climate with an elegant exterior when they were assigned to design educational facilities for Learnmark Horsens in Denmark. It is a well-known fact that concentration levels drop if the indoor temperature goes up and this led the architects to search for an aesthetic solution to block out the solar radiation.

It was decided to create a sun screen mounted approximately two metres from the facade to give the building a light expression without compromising the screening effect. A further advantage of

mounting the panels in this way is that a small passage is created between the building itself and the sun screens, giving easy access for cleaning windows and general maintenance.

The expanded metal panels provide the perfect balance between light and shade. To give the facade a more vibrant look, the architects chose two types of expanded metal panels from RMIG, and have successfully given an interesting dimension to the otherwise square facade with these two different kinds of mesh. This decorative effect is further enhanced when some of the panels are opened.

MORE...
Scan the code with
your smartphone for
more info on the
Learnmark project.



MORE THAN JUST BUILDINGS

RMIG City Emotion is for everyone who values the beautiful and innovative qualities of our cities, because a city is not just about buildings. A city is a place for emotion and it requires our full attention to unleash its aesthetic appeal.

RMIG City Emotion captures the passion for creative urban design by offering innovative technologies and materials. We can help you realise the most ambitious architectural projects and their emotional potential.

- Let us guide you through the benefits and practicality of your design
- We can work on your drawings in CAD, 2D and 3D formats
- Use perforated sheets, embossed sheets or expanded metal
- Enjoy the unique finishing operations and surface treatments

RMIG is the world's largest manufacturer and supplier of perforated metal. In addition to exterior cladding, the company also supplies products for a large number of construction applications such as car park and security screening, acoustic wall linings, ceilings, lighting, street furniture, balustrades and walkways.

Austria: +43 2256 62482

Belgium: +32 53 76 77 40

Denmark: +45 44 20 88 00

France: +33 4 72 47 43 43

Germany: +49 34 906 50 0

Italy: +39 010 740 39 39

The Netherlands: +31 184 491 919

Norway: +47 33 33 66 66

Poland: +48 61 88 63 270

Romania: +40 742 990226

Spain: +49 34 906 50 334

Sweden: +46 501 682 00

Switzerland: +41 62 287 88 88

United Kingdom: +44 1925 839 610

Other locations

Eastern Europe: +49 34 906 50 302

Outside Europe: +45 44 20 88 00

WWW.CITY-EMOTION.COM

